

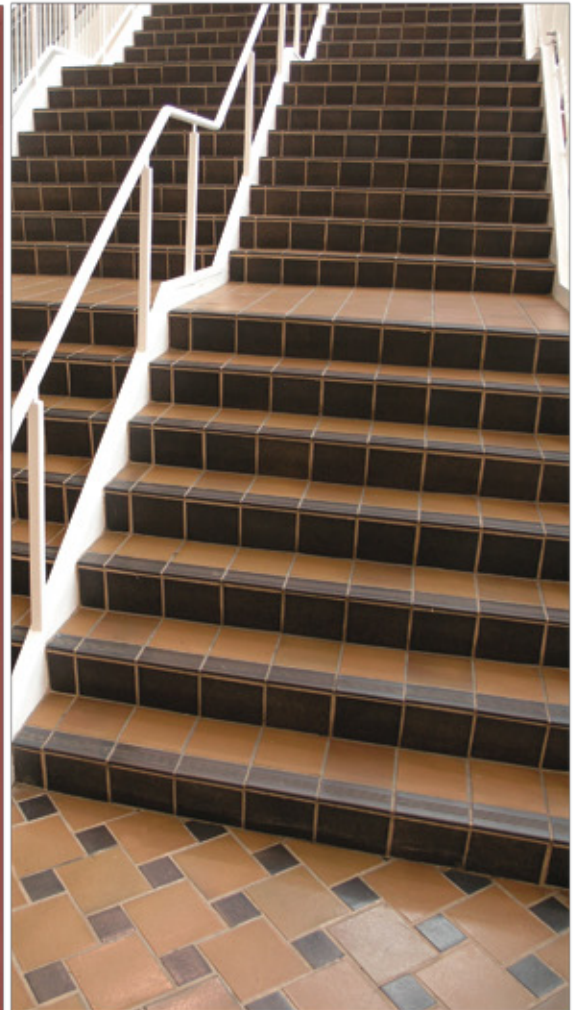
COMMERCIAL ■ RESIDENTIAL ■ INDOORS ■ OUTDOORS

METROPOLITAN CERAMICS PRODUCTS ARE...



FEATURES AND BENEFITS

- **Slip Resisting**
For areas subject to spills and moisture.
- **Very low absorption**
Suitable for indoor and outdoor applications.
- **Manufactured with relieved edges**
Relaxed, natural look that resists chipping.
- **Extruded not pressed**
Extremely durable for years of heavy use.
- **Vertical installation responsive**
Expands installation options from floors to walls.
- **Freeze/Thaw Resisting**
Suitable for all climates.
- **Through the body color**
Color will not wear off.
- **Modular Sizes**
Adds pattern and interest to the most basic installations.
- **Economically Friendly**
Cost less per year than all other floor finishes over the life of a building.



METROPOLITAN
CERAMICS

Ironrock Since 1866



GREEN SQUARED CERTIFIED



VERIFIED BY
SCS Global Services



Certified Colors

QUARRYBASICS 310 - Mayflower Red 220 - Auburn 108 - Chestnut Brown	QUARRYBASICS XA ABRASIVE 31XA - Mayflower Red Abrasive 57XA - Puritan Gray Abrasive 18XA - Chestnut Brown
DURAQUARRY 308 - Duraquarry	METRO TREAD 31T - Mayflower Red
SOMERSET 350 - Harvard Square 458 - Cordoba 250 - Galaxy	DOWN TO EARTH 350 - Red Paver 458 - Bedrock



TEST RESULTS

Specification	Test	Standard	Result
Abrasion Resistance	ASTM C1243	Maximum value of 275 mm ³	Metropolitan tests at < 275 mm ³
Absorption 5-hour boil	ASTM C373	Maximum 5%	Metropolitan tests at 3% maximum and qualifies as vitreous.
Breaking Strength	ASTM C648	Average ≥ 275 lbf.	Metropolitan 1/2" thick tests at 800 lbf. or better. Metropolitan 3/8" thick tests at 400 lbf. or better.
Thickness	ASTM C499	Max. range of .050"	Metropolitan meets the standard.
Nominal Size	ASTM C499	The facial dimension of each tile in the sample shall not vary more than ±2.00% from the nominal dimension.	Metropolitan meets the standard.
Freeze/ Thaw	ASTM C1026	Observations after 300 cycles. No visible damage.	Metropolitan meets the standard.
Shear Bond Strength	ASTM C482	50 P.S.I. or better	Metropolitan exceeds the standard.
DCOF Acu Test (wet)	ANSI A137.1 - 2012 BOT 3000	Threshold of 0.42	At time of manufacture, Metropolitan QUARRYBASICS® XA Abrasive tests at ≥0.70. All other Metropolitan products exceed 0.60.
Warpage	ASTM C485	Min. -1.5% Max. 1.5% along any edge. Min -1.0% Max 1.0% on either diagonal.	Metropolitan meets the standard.
Wedging	ASTM C502	Min. -1.0% Max. 1.0%	Metropolitan meets the standard.
Chemical Resistance	ASTM C650	As Reported	Class A Classification
Stain Resistance	ASTM C1378	As Reported	Metropolitan meets the standard.
Scratch Hardness	MOHS	No Industry Standard	7



METROPOLITAN
C E R A M I C S

Ironrock Since 1866

MET01-19