

# GEM Series

GLAZED PORCELAIN



## GEM SERIES - Glazed Porcelain (Non-Rectified)



**BIANCO**  
Glossy Finish  
6 x 25 cm (2.5" x 10")  
Nominal Thickness: 9 mm  
Code# KD.GE.BIA.2,5x10



**ARGENTO**  
Glossy Finish  
6 x 25 cm (2.5" x 10")  
Nominal Thickness: 9 mm  
Code# KD.GE.ARG.2,5x10



**CARAIBI**  
Glossy Finish  
6 x 25 cm (2.5" x 10")  
Nominal Thickness: 9 mm  
Code# KD.GE.CAR.2,5x10



**COBALTO**  
Glossy Finish  
6 x 25 cm (2.5" x 10")  
Nominal Thickness: 9 mm  
Code# KD.GE.COB.2,5x10



**NERO**  
Glossy Finish  
6 x 25 cm (2.5" x 10")  
Nominal Thickness: 9 mm  
Code# KD.GE.NRO.2,5x10

All items shown in this document are part of Olympia's stocking program. For special orders, please contact your Olympia Tile Sales Representative.

**GEM SERIES - Glazed Porcelain (Non-Rectified)**

**KITKAT DECORS**



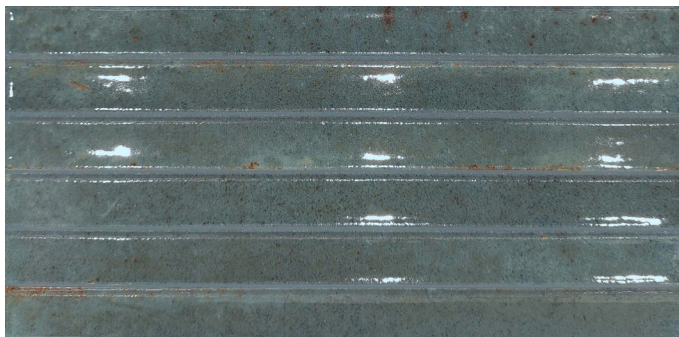
**BIANCO Kitkat Decor**

Glossy Finish  
12.5 x 25 cm (5" x 10")  
Nominal Thickness: 9 mm  
Code# KD.GE.BIA.0510.KDC



**ARGENTO Kitkat Decor**

Glossy Finish  
12.5 x 25 cm (5" x 10")  
Nominal Thickness: 9 mm  
Code# KD.GE.ARG.0510.KDC



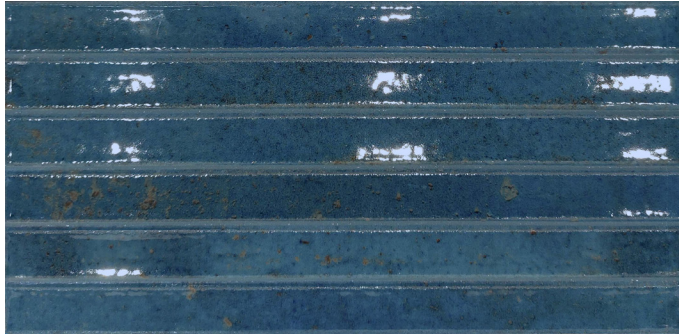
**CARAIBI Kitkat Decor**

Glossy Finish  
12.5 x 25 cm (5" x 10")  
Nominal Thickness: 9 mm  
Code# KD.GE.CAR.0510.KDC

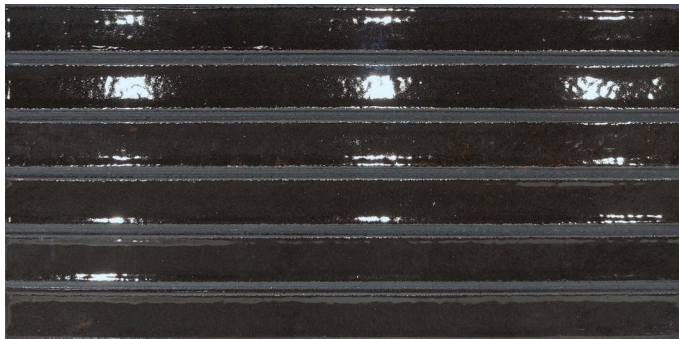
**All items shown in this document are part of Olympia's stocking program.** For special orders, please contact your Olympia Tile Sales Representative.

**GEM SERIES - Glazed Porcelain (Non-Rectified)**

**KITKAT DECORS**



**COBALTO Kitkat Decor**  
Glossy Finish  
12.5 x 25 cm (5" x 10")  
Nominal Thickness: 9 mm  
Code# KD.GE.COB.0510.KDC



**NERO Kitkat Decor**  
Glossy Finish  
12.5 x 25 cm (5" x 10")  
Nominal Thickness: 9 mm  
Code# KD.GE.NRO.0510.KDC

**All items shown in this document are part of Olympia's stocking program.** For special orders, please contact your Olympia Tile Sales Representative.

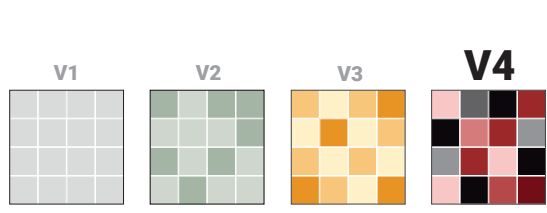
# GEM SERIES

Tests Performed -- Results Conform

Test	Standard Used	Min. Requirements	Results
Water Absorption	ISO 10545-3	< 0.5%	Conforms
Bending / Breaking Strength	ISO 10545-4	> 1300N	Conforms
Modulus of Rupture	ISO 10545-4	> 35N/mm <sup>2</sup>	Conforms
Scratch Hardness	MOHs Scale	MOHs 5	Conforms
Chemical Resistance	ISO 10545-13	min. UB	Conforms
Frost Resistance	ISO 10545-12	Required	Conforms
Stain Resistance	ISO 10545-14	> Class 3	Conforms

Technical data is supplied by the manufacturer and is subject to change at any time. Olympia does not provide warranties as to the specifications of any product.

## Colour Variation



## Member



Member of Canada Green Building Council



Member of U.S. Green Building Council

TTMAC ACTTM

The Terrazzo, Tile, and Marble Association of Canada



Ceramic Tile Distributors of America (CTDA)



Marble Institute of America

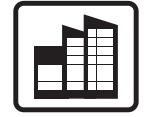
For information concerning LEED, please contact our Sales Representative

## Examples of Recommended Applications

Residential



Commercial



Indoor



Outdoor



Wall



Floor



## Packing Details

TILE SIZE	PC/BOX	SF/BOX	LB/BOX	BOX/PAL
2.5" x 10" Glossy	50	8.07	32.50	85
5" x 10" Glossy	26	8.71	29.38	81



## Recommended FLEX TILE Installation Systems

For other suitable options & complete installation details, visit [www.flextile.net](http://www.flextile.net)

PRODUCT	WALL APPLICATION		FLOOR APPLICATION	
	Interior	Exterior	Interior	Exterior
<b>TILE BOND COAT</b>	<ul style="list-style-type: none"> <li>• 66 FlexLite PM Mortar</li> <li>• 5400 Maxi-Flex</li> </ul>	<ul style="list-style-type: none"> <li>• 5400 Maxi-Flex</li> <li>• 51/44 Latex Mortar System</li> </ul>	<ul style="list-style-type: none"> <li>• 50 PM Mortar</li> <li>• 52 Versatile PM Mortar</li> <li>• 5400 Maxi-Flex</li> </ul>	<ul style="list-style-type: none"> <li>• 5400 Maxi-Flex</li> <li>• 51/44 Latex Mortar System</li> </ul>
<b>GROUT</b>	<ul style="list-style-type: none"> <li>• 500 PM Unsanded</li> <li>• 600 PM Sanded</li> <li>• 1600UPG PM Grout</li> </ul>	<ul style="list-style-type: none"> <li>• 600 PM Sanded</li> <li>• 1600UPG PM Grout</li> </ul>	<ul style="list-style-type: none"> <li>• 600 PM Sanded</li> <li>• 1600UPG PM Grout</li> <li>• FlexEpoxy 100 Epoxy Grout</li> </ul>	<ul style="list-style-type: none"> <li>• 600 PM Sanded</li> <li>• 1600UPG PM Grout</li> </ul>
<b>CAULKING</b>	Ultra Performance (colour-matched to grout)	Ultra Performance (colour-matched to grout)	Ultra Performance (colour-matched to grout)	Ultra Performance (colour-matched to grout)

### SURFACE PREPARATION (If Required)

- Floor levelling: 59 Flex Flo / 5900 Flex Flo Plus Self Levelling Underlayment
- Waterproofing: WP900 Waterproof Membrane
- Crack Isolation/Uncoupling: Flexilastic 1000 Crack Isolation Membrane / FlexMat Uncoupling Membrane

\* For a complete listing of FLEX TILE products and accessories including Sound Control, In-Floor Heating, and further setting options, please visit [www.flextile.net](http://www.flextile.net)



## "MORE" Surface Care Product Guide

Task	Product Recommendation	Dilution with Water	Frequency
Grout Sealing	MORE™ Grout, Ceramic & Porcelain Sealer	Ready to use	Commercial: 1-3 Years Residential: 5-8 Years
Daily Maintenance	MORE™ Stone and Tile Cleaner	1 : 128 Ratio	Daily
Deep Cleaning	MORE™ Alkaline Cleaner	1 : 4 Ratio	As Needed
Grout Haze- Cementitious	MORE™ Acidic Cleaner	1 : 4 Ratio	As Needed
Grout Haze - Epoxy / Urethane	MORE™ Coating Stripper*	Ready to use	As Needed

\* Always test in an inconspicuous area to make sure the product is achieving the desired results and is not damaging the finish of the surface.





BIANCO

**olympiatile+stone**





ARGENTO

**olympiatile+stone**<sup>®</sup>







CARAIBI



COBALTO

**olympiatile+stone**

NERO



NERO

# GEM SERIES: Sample Board MEF-361 & Folder FL-971



Colour may vary slightly from images shown. It is highly recommended to view physical samples of tile prior to purchase. Note that shade variations between tiles is characteristic and adds to the inherent beauty of the product. Please visit a showroom near you or request a sample from your Olympia Tile Sales Representative.

It is Olympia Tile's policy to stock all items for sale. Should you require additional sizes, finishes or colours, Olympia has a Special Order Department to help find exactly what you are looking for. Please contact your Olympia Tile Sales Representative for more details. Note that minimum order quantities and longer lead times apply to all special order items.

## the olympiatile+stone® group

### OLYMPIA TILE + STONE INTERNATIONAL INC.

#### CORPORATE OFFICE AND SHOWROOM TORONTO

1000 Lawrence Ave. West  
Ontario M6A 1C6  
T: 416 785 9555  
Toll Free: 1 800 268 1613  
F: 416 785 9682

#### VAUGHAN

100A Royal Group Crescent  
Ontario L4H 1X9  
T: 905 266 0420  
F: 905 266 0423

#### VANCOUVER

8220 Fraser Reach Court  
Burnaby, BC V3N 0G2  
T: 604 294 2244  
Toll Free: 1 800 663 9441  
F: 604 294 0528

#### CALGARY

3308 - 11th Street S.E.  
Alberta T2G 3G8  
T: 403 287 1070  
Toll Free: 1 800 322 8182  
F: 403 243 1888

#### EDMONTON

11540 - 163rd Street  
Alberta T5M 3T3  
T: 780 452 5050  
Toll Free: 1 800 619 4438  
F: 780 451 4391

#### WINNIPEG

560 Sheppard Street  
Manitoba R2X 2P8  
T: 204 633 5736  
Toll Free: 1 800 665 8017  
F: 204 632 4644

#### WINDSOR

2825 Lauzon Pkwy  
Unit 208, Windsor  
Ontario N8T 3H5  
T: 519 966 2500  
Toll Free: 1 877 410 5953  
F: 519 969 2407

#### LONDON

234 Exeter Road  
Ontario N6L 1A3  
T: 519 652 5011  
Toll Free: 1 800 265 4690  
F: 519 652 5021

#### HAMILTON

75 Milburn Road  
Ontario L8E 3A3  
T: 905 560 5520  
Toll Free: 1 800 263 1370  
F: 905 578 3593

#### OTTAWA

2480 Don Reid Drive  
Ontario K1H 1E1  
T: 613 736 9570  
Toll Free: 1 800 267 1864  
F: 613 736 9563

#### MONTREAL

555 rue Locke  
Ville St-Laurent,  
Quebec H4T 1X7  
T: 514 345 8666  
Toll Free: 1 800 361 1954  
F: 514 345 8825

#### QUEBEC

2405 rue Watt  
Quebec G1P 3X2  
T: 418 657 5557  
Toll Free: 1 800 463 5516  
F: 418 657 6708

#### HALIFAX

55 Akerley Boulevard  
Dartmouth, Nova Scotia  
B3B 1M3  
T: 902 468 9260  
Toll Free: 1 800 565 7790  
F: 902 468 0011

### SLAB DIVISION

#### TORONTO

22 Dufflaw Road | Toronto | Ontario | M6A 2W1  
T: 416 785 9555 ext 1320 | F: 416 781 4521

#### VAUGHAN

100A Royal Group Crescent | Vaughan | Ontario | L4H 1X9  
T: 905 266 0420 | F: 905 266 0423

### OLYMPIA TILE (USA), INC.

#### CORPORATE OFFICE

701 Berkshire Lane North  
Minneapolis (Plymouth)  
Minnesota 55441  
T: 763 545 5455  
Toll Free: 1 800 288 3026  
F: 763 542 9830

#### FLORIDA

**ALPHA TILE & STONE**  
2443 East Meadow Blvd.  
Tampa, Florida 33619  
T: 813 620 9000  
Toll Free: 1 800 785 9000  
F: 813 621 0606

10898-A Metro Parkway  
**Fort Myers**, Florida 33966  
T: 239 275 8288  
Toll Free: 1 800 785 8288  
F: 239 275 0116

1808 Whitfield Ave.  
**Sarasota**, Florida 34243  
T: 941 727 7433  
Toll Free: 1 800 785 3484  
F: 941 727 7381

#### IOWA

**KATE-LO TILE & STONE**  
4405 121st Street  
**Des Moines (Urbandale)**  
Iowa 50323  
T: 515 270 4920  
Toll Free: 1 800 320 1387  
F: 515 270 7035

#### MICHIGAN

**BEAVER TILE & STONE**  
24700 Drake Rd.  
**Detroit West (Farmington Hills)**  
Michigan 48335  
T: 248 476 2333  
Toll Free: 1 800 825 0551  
F: 248 476 4636

1700 Stutz Dr., Suite 101  
**Detroit North (Troy)**  
Michigan 48084  
T: 248 649 5552  
F: 248 649 0741

2780 Enterprise Ct.  
**Saginaw**, Michigan 48603  
T: 989 790 5851  
Toll Free: 1 800 797 0897  
F: 989 790 0311  
13085 23 Mile Rd.  
**Detroit East (Shelby Township)**  
Michigan 48315  
T: 586 991 0780  
Toll Free: 1 800 889 5395  
F: 586 991 0784

1694 Gezon Parkway  
**Grand Rapids, (Wyoming)**  
Michigan 49509  
T: 616 534 2883  
Toll Free: 1 800 797 0727  
F: 616 534 4784

**MINNESOTA**  
**KATE-LO TILE & STONE**  
701 Berkshire Lane North  
**Minneapolis (Plymouth)**  
Minnesota 55441  
T: 763 545 5455  
Toll Free: 1 800 288 3026  
F: 763 542 9830

#### NEBRASKA

**KATE-LO TILE & STONE**  
13211 Chandler Road, Suite 400  
**Omaha (La Vista)**  
Nebraska 68138-3703  
T: 402 614 9010  
Toll Free: 1 877 687 6636  
F: 402 614 0989

#### NEW JERSEY

**NEW JERSEY TILE & STONE**  
70 Newfield Avenue  
Raritan Center, **Edison**  
New Jersey 08837  
T: 732 512 1818  
Toll Free: 1 800 513 8453  
F: 732 512 1881

#### NEW YORK

**DOBKIN TILE & STONE**  
51 Benbro Drive  
**Buffalo (Cheektowaga)**  
New York 14225  
T: 716 684 1200  
Toll Free: 1 800 759 1414  
F: 716 684 1294

#### OREGON

**THOMPSON TILE & STONE**  
3549 NW Yeon Ave.  
**Portland**  
Oregon 97210  
T: 971 803 7551  
Toll Free: 1 800 827 4092  
F: 971 319 6975

#### WISCONSIN

**LEXCO TILE & STONE**  
1616 S. 108th Street,  
**Milwaukee**  
Wisconsin 53214  
T: 414 771 2900  
Toll Free: 1 800-242-2249  
F: 414 771 9153

#### WASHINGTON

**THOMPSON TILE & STONE**  
3900 East Alki,  
**Spokane**  
Washington 99208  
T: 509 309 3476  
Toll Free: 1 800 827 2555  
F: 509 534 5218

6030 S. 196th Street  
**Kent**  
Washington 98032  
T: 206 900 7327  
Toll Free: 1 800 827 4093  
F: 206 294 5933

**FLEXITILE LTD.**   
**MANUFACTURING PLANTS**  
[www.flexitile.net](http://www.flexitile.net)

**TORONTO** (Head Office)  
111 Royal Group Crescent Unit A  
Vaughan, ON L4H 1X9  
Phone: (416) 255-1111 | 1-800-699-3623  
Fax: (416) 255-1729

**BURNABY**  
2969 Lake City Way | Burnaby  
British Columbia | V5A 2Z6  
T: 604 420-4914 | Toll Free: 1 888 236 4486  
F: 604 420-0936

CANADA-US BRANCH LIST DATE REV:04-13-2022RM  
REV 05-17-2023 NEB

All sales and transactions are subject to our terms and conditions of sale, available on our website.

**olympiatile+stone®**