

RETINA Series

PORCELAIN



olympiatile+stone®

RETINA SERIES - Coloured Body Porcelain (Rectified)



NEVE (White)

60 x 120 cm (24" x 48")
Thickness 6.5 mm
Matte Finish
IM.RT.NEV.2448.MT

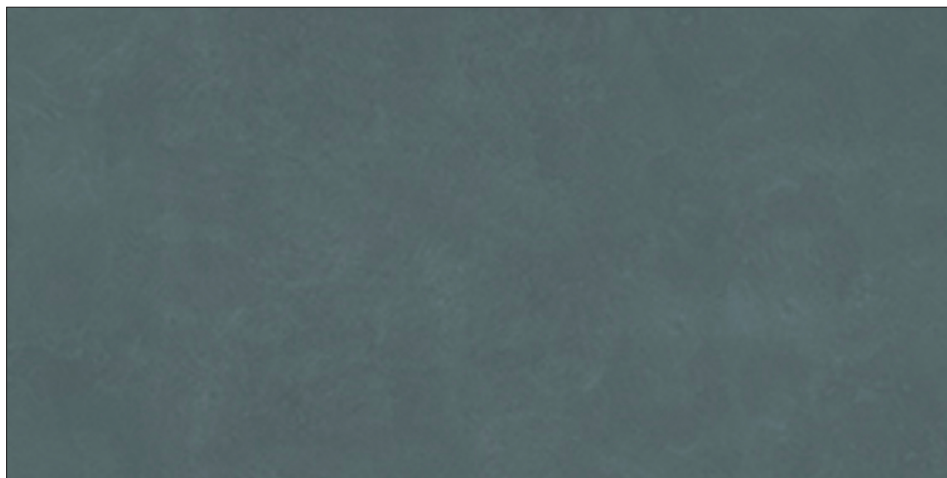
120 x 120 cm (48" x 48")
Thickness 10 mm
Matte Finish
IM.RT.NEV.4848.MT



FUMO (Grey)

60 x 120 cm (24" x 48")
Thickness 6.5 mm
Matte Finish
IM.RT.FUM.2448.MT

120 x 120 cm (48" x 48")
Thickness 10 mm
Matte Finish
IM.RT.FUM.4848.MT



PETROLIO (Blue)

60 x 120 cm (24" x 48")
Thickness 6.5 mm
Matte Finish
IM.RT.PTR.2448.MT

All items shown in this document are part of Olympia's stocking program. For special orders, please contact your Olympia Tile Sales Representative.

RETINA SERIES - Coloured Body Porcelain (Rectified)



CORDA (Beige)

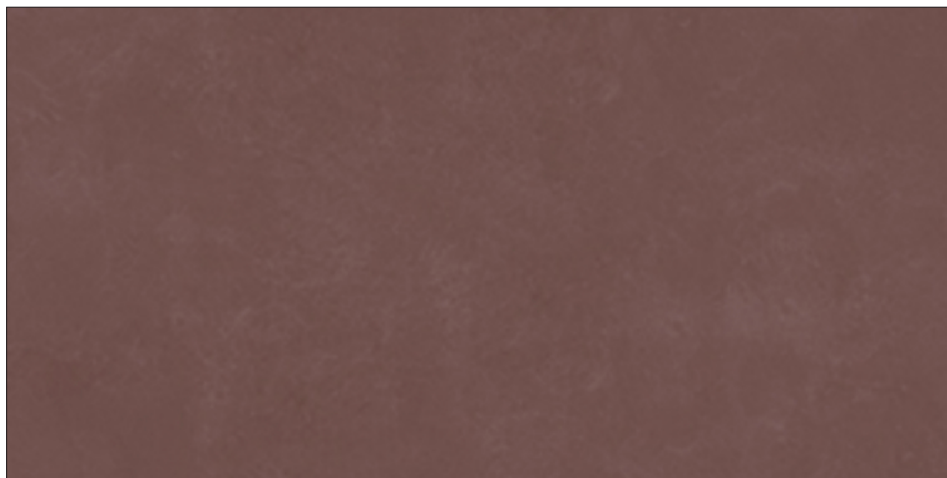
60 x 120 cm (24" x 48")
Thickness 6.5 mm
Matte Finish
IM.RT.CRD.2448.MT

120 x 120 cm (48" x 48")
Thickness 10 mm
Matte Finish
IM.RTCRD.4848.MT



CARMINIO (Rust)

60 x 120 cm (24" x 48")
Thickness 6.5 mm
Matte Finish
IM.RT.CMO.2448.MT



BORGOGNA (Burgundy)

60 x 120 cm (24" x 48")
Thickness 6.5 mm
Matte Finish
IM.RT.BRG.2448.MT

All items shown in this document are part of Olympia's stocking program. For special orders, please contact your Olympia Tile Sales Representative.

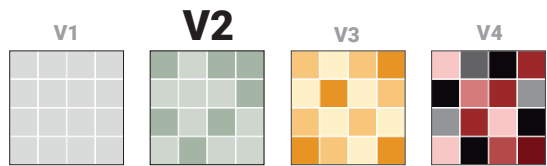
RETINA SERIES

Tests Performed -- Results Conform

Test	Standard Used	Min. Requirements	Results
Water Absorption	ISO 10545-3	< 0.5%	Conforms
Dynamic Coefficient of Friction	ANSI A137.1/2012	0.42	Conforms
Slip Resistance	DIN 51130/51097	R-9	Conforms
Bending / Breaking Strength	ISO 10545-4	> 1300N	Conforms
Deep Abrasion Resistance	ISO 10545-6	≤ 175 mm ³	Conforms
Chemical Resistance	ISO 10545-13	min. UB	Conforms
Frost Resistance	ISO 10545-12	Required	Conforms
Stain Resistance	ISO 10545-14	> Class 3	Conforms

Technical data is supplied by the manufacturer and is subject to change at any time. Olympia does not provide warranties as to the specifications of any product.

Colour Variation



Member



Member of Canada Green Building Council



Member of U.S. Green Building Council

TTMAC ACTTM

The Terrazzo, Tile, and Marble Association of Canada



Ceramic Tile Distributors of America (CTDA)



Marble Institute of America

For information concerning LEED, please contact our Sales Representative

Examples of Recommended Applications

Residential



Commercial



Indoor



Outdoor



Wall



Floor



Packing Details

TILE SIZE	PC/BOX	SF/BOX	LB/BOX	BOX/PAL
24" x 48" Matte (6.5 mm thickness)	4	31.01	100.32	16
TILE SIZE	PC/BOX	SF/BOX	LB/PAL	PC/PAL
48" x 48" Matte (10 mm thickness)	-	-	2698	36

Recommended FLEX TILE Installation Systems

For other suitable options & complete installation details, visit www.flextile.net

PRODUCT	WALL APPLICATION		FLOOR APPLICATION	
	Interior	Exterior	Interior	Exterior
TILE BOND COAT	<ul style="list-style-type: none"> • 66 FlexLite • 56SR LHT Mortar 	<ul style="list-style-type: none"> • 5400 Maxi-Flex • 51/44 Latex Mortar System 	<ul style="list-style-type: none"> • 55LHT LHT Mortar • 56SR LHT Mortar 	<ul style="list-style-type: none"> • 5400 Maxi-Flex • 51/44 Latex Mortar System
GROUT	<ul style="list-style-type: none"> • 500 PM Unsanded • 600 PM Sanded • 1600UPG PM Grout 	<ul style="list-style-type: none"> • 600 PM Sanded • 1600UPG PM Grout 	<ul style="list-style-type: none"> • 600 PM Sanded • 1600UPG PM Grout • FlexEpoxy 100 Epoxy Grout 	<ul style="list-style-type: none"> • 600 PM Sanded • 1600UPG PM Grout
CAULKING	Ultra Performance (colour-matched to grout)	Ultra Performance (colour-matched to grout)	Ultra Performance (colour-matched to grout)	Ultra Performance (colour-matched to grout)

SURFACE PREPARATION (If Required)

- Floor levelling: 59 Flex Flo / 5900 Flex Flo Plus Self Levelling Underlayment
- Waterproofing: WP900 Waterproof Membrane
- Crack Isolation/Uncoupling: Flexilastic 1000 Crack Isolation Membrane / FlexMat Uncoupling Membrane

* For a complete listing of FLEX TILE products and accessories including Sound Control, In-Floor Heating, and further setting options, please visit www.flextile.net



"MORE" Surface Care Product Guide

Task	Product Recommendation	Dilution with Water	Frequency
Grout Sealing	MORE™ Grout, Ceramic & Porcelain Sealer	Ready to use	Commercial: 1-3 Years Residential: 5-8 Years
Daily Maintenance	MORE™ Stone and Tile Cleaner	1 : 128 Ratio	Daily
Deep Cleaning	MORE™ Alkaline Cleaner	1 : 4 Ratio	As Needed
Grout Haze- Cementitious	MORE™ Acidic Cleaner	1 : 4 Ratio	As Needed
Grout Haze - Epoxy / Urethane	MORE™ Coating Stripper*	Ready to use	As Needed

* Always test in an inconspicuous area to make sure the product is achieving the desired results and is not damaging the finish of the surface.





NEVE (White)



CORDA (Beige)



NEVE (White)



CARMINIO (Rust)



CARMINIO (Rust)

BORGOGNA (Burgundy)



FUMO (Grey)



PETROLIO (Blue)

BORGOGNA (Burgundy)



FUMO (Grey)

RETINA SERIES: Sample Board MEF-107 & Folder FL-711



Colour may vary slightly from images shown. It is highly recommended to view physical samples of tile prior to purchase. Note that shade variations between tiles is characteristic and adds to the inherent beauty of the product. Please visit a showroom near you or request a sample from your Olympia Tile Sales Representative.

It is Olympia Tile's policy to stock all items for sale. Should you require additional sizes, finishes or colours, Olympia has a Special Order Department to help find exactly what you are looking for. Please contact your Olympia Tile Sales Representative for more details. Note that minimum order quantities and longer lead times apply to all special order items.

the olympiatile+stone® group

OLYMPIA TILE + STONE INTERNATIONAL INC.

CORPORATE OFFICE AND SHOWROOM TORONTO
1000 Lawrence Ave. West
Ontario M6A 1C6
T: 416 785 9555
Toll Free: 1 800 268 1613
F: 416 785 9682

VAUGHAN
100A Royal Group Crescent
Ontario L4H 1X9
T: 905 266 0420
F: 905 266 0423

VANCOUVER
8220 Fraser Reach Court
Burnaby, BC V3N 0G2
T: 604 294 2244
Toll Free: 1 800 663 9441
F: 604 294 0528

CALGARY
3308 - 11th Street S.E.
Alberta T2G 3G8
T: 403 287 1070
Toll Free: 1 800 322 8182
F: 403 243 1888

EDMONTON
11540 - 163rd Street
Alberta T5M 3T3
T: 780 452 5050
Toll Free: 1 800 619 4438
F: 780 451 4391

WINNIPEG
560 Sheppard Street
Manitoba R2X 2P8
T: 204 633 5736
Toll Free: 1 800 665 8017
F: 204 632 4644

WINDSOR
2825 Lauzon Pkwy
Unit 208, Windsor
Ontario N8T 3H5
T: 519 966 2500
Toll Free: 1 877 410 5953
F: 519 969 2407

LONDON
234 Exeter Road
Ontario N6L 1A3
T: 519 652 5011
Toll Free: 1 800 265 4690
F: 519 652 5021

HAMILTON
75 Milburn Road
Ontario L8E 3A3
T: 905 560 5520
Toll Free: 1 800 263 1370
F: 905 578 3593

OTTAWA
2480 Don Reid Drive
Ontario K1H 1E1
T: 613 736 9570
Toll Free: 1 800 267 1864
F: 613 736 9563

MONTREAL
555 rue Locke
Ville St-Laurent,
Quebec H4T 1X7
T: 514 345 8666
Toll Free: 1 800 361 1954
F: 514 345 8825

QUEBEC
2405 rue Watt
Quebec G1P 3X2
T: 418 657 5557
Toll Free: 1 800 463 5516
F: 418 657 6708

HALIFAX
55 Akerley Boulevard
Dartmouth, Nova Scotia
B3B 1M3
T: 902 468 9260
Toll Free: 1 800 565 7790
F: 902 468 0011

SLAB DIVISION

TORONTO
22 Dufflaw Road | Toronto | Ontario | M6A 2W1
T: 416 785 9555 ext 1320 | F: 416 781 4521

VAUGHAN
100A Royal Group Crescent | Vaughan | Ontario | L4H 1X9
T: 905 266 0420 | F: 905 266 0423

OLYMPIA TILE (USA), INC.

CORPORATE OFFICE
701 Berkshire Lane North
Minneapolis (Plymouth)
Minnesota 55441
T: 763 545 5455
Toll Free: 1 800 288 3026
F: 763 542 9830

FLORIDA ALPHA TILE & STONE
2443 East Meadow Blvd.
Tampa, Florida 33619
T: 813 620 9000
Toll Free: 1 800 785 9000
F: 813 621 0606

10898-A Metro Parkway
Fort Myers, Florida 33966
T: 239 275 8288
Toll Free: 1 800 785 8288
F: 239 275 0116

1808 Whitfield Ave.
Sarasota, Florida 34243
T: 941 727 7433
Toll Free: 1 800 785 3484
F: 941 727 7381

IOWA KATE-LO TILE & STONE
4405 121st Street
Des Moines (Urbandale)
Iowa 50323
T: 515 270 4920
Toll Free: 1 800 320 1387
F: 515 270 7035

MICHIGAN BEAVER TILE & STONE
24700 Drake Rd.
Detroit West (Farmington Hills)
Michigan 48335
T: 248 476 2333
Toll Free: 1 800 825 0551
F: 248 476 4636

1700 Stutz Dr., Suite 101
Detroit North (Troy)
Michigan 48084
T: 248 649 5552
F: 248 649 0741

2780 Enterprise Ct.
Saginaw, Michigan 48603
T: 989 790 5851
Toll Free: 1 800 797 0897
F: 989 790 0311
13085 23 Mile Rd.
Detroit East (Shelby Township)
Michigan 48315
T: 586 991 0780
Toll Free: 1 800 889 5395
F: 586 991 0784

1694 Gezon Parkway
Grand Rapids, (Wyoming)
Michigan 49509
T: 616 534 2883
Toll Free: 1 800 797 0727
F: 616 534 4784

MINNESOTA KATE-LO TILE & STONE
701 Berkshire Lane North
Minneapolis (Plymouth)
Minnesota 55441
T: 763 545 5455
Toll Free: 1 800 288 3026
F: 763 542 9830

NEBRASKA KATE-LO TILE & STONE
13211 Chandler Road, Suite 400
Omaha (La Vista)
Nebraska 68138-3703
T: 402 614 9010
Toll Free: 1 877 687 6636
F: 402 614 0989

NEW JERSEY NEW JERSEY TILE & STONE
70 Newfield Avenue
Raritan Center, **Edison**
New Jersey 08837
T: 732 512 1818
Toll Free: 1 800 513 8453
F: 732 512 1881

NEW YORK DOBKIN TILE & STONE
51 Benbro Drive
Buffalo (Cheektowaga)
New York 14225
T: 716 684 1200
Toll Free: 1 800 759 1414
F: 716 684 1294

OREGON THOMPSON TILE & STONE
3549 NW Yeon Ave.
Portland
Oregon 97210
T: 971 803 7551
Toll Free: 1 800 827 4092
F: 971 319 6975

WISCONSIN LEXCO TILE & STONE
1616 S. 108th Street,
Milwaukee
Wisconsin 53214
T: 414 771 2900
Toll Free: 1 800-242-2249
F: 414 771 9153

WASHINGTON THOMPSON TILE & STONE
3900 East Aiki,
Spokane
Washington 99208
T: 509 309 3476
Toll Free: 1 800 827 2555
F: 509 534 5218

6030 S. 196th Street
Kent
Washington 98032
T: 206 900 7327
Toll Free: 1 800 827 4093
F: 206 294 5933

FLEXITILE LTD. 
MANUFACTURING PLANTS
www.flexitile.net

TORONTO (Head Office)
111 Royal Group Crescent Unit A
Vaughan, ON L4H 1X9
Phone: (416) 255-1111 | 1-800-699-3623
Fax: (416) 255-1729

BURNABY
2969 Lake City Way | Burnaby
British Columbia | V5A 2Z6
T: 604 420-4914 | Toll Free: 1 888 236 4486
F: 604 420-0936

CANADA-US BRANCH LIST DATE REV 04-13-2022 RM
REV 05-17-2023 NBS

All sales and transactions are subject to our terms and conditions of sale, available on our website.

olympiatile+stone®